

Asian Clam Survey

Owasco Lake

2014



Thanks to:

- Ed Wagner
- Dave Wasileski, Owasco Marine
- Drew Snell
- Eli Vitale, Nicole Pionteck, and
Tim Schneider
- Don Seitz
- Hilary Mosher
- Lisa Cleckner

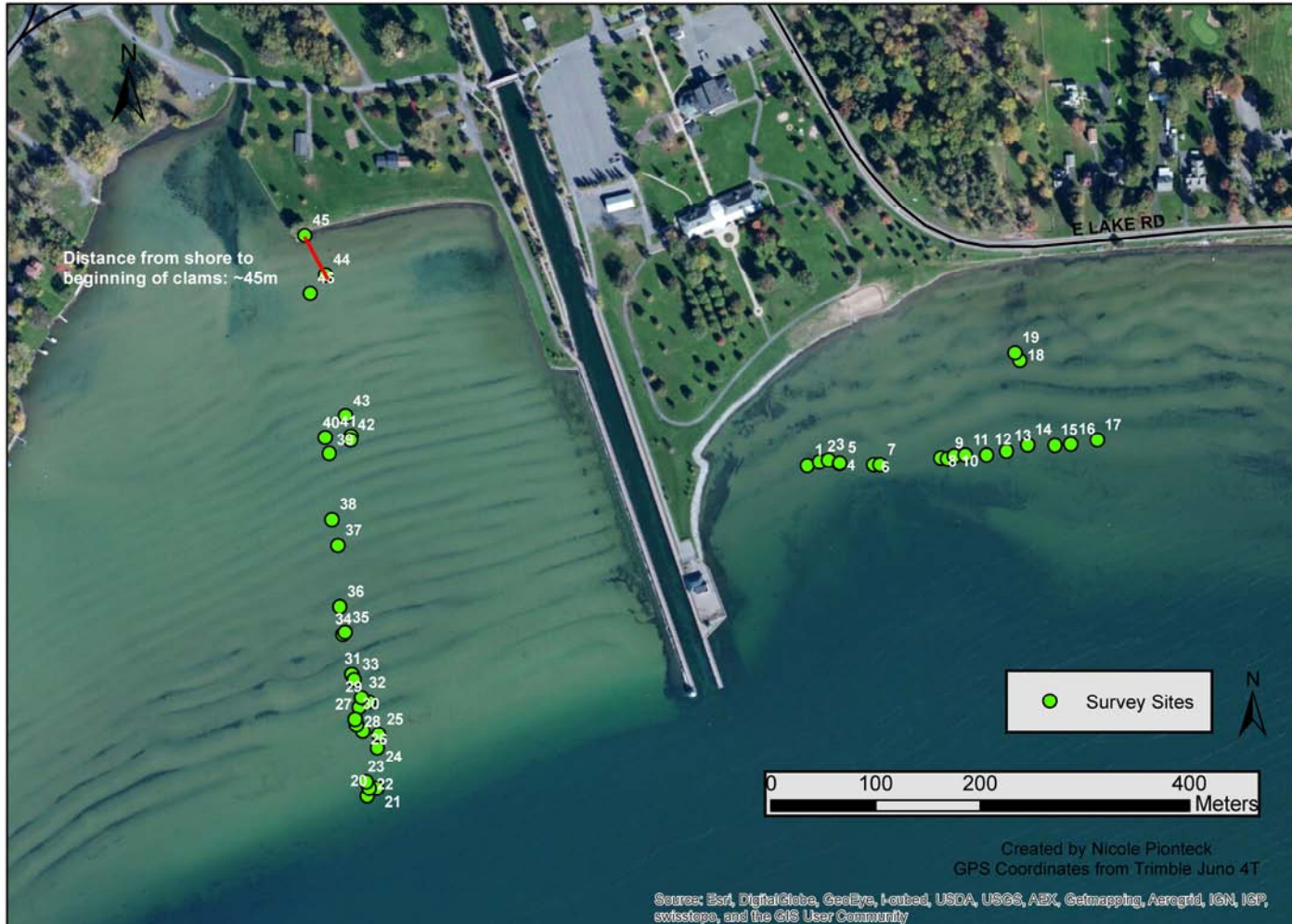


Asian Clams

- Juvenile clams can reach maturity in 3-6 months or when about 6-10 mm in size.
- Can reach 10-30 mm in size during their first year depending on food availability and temperatures.

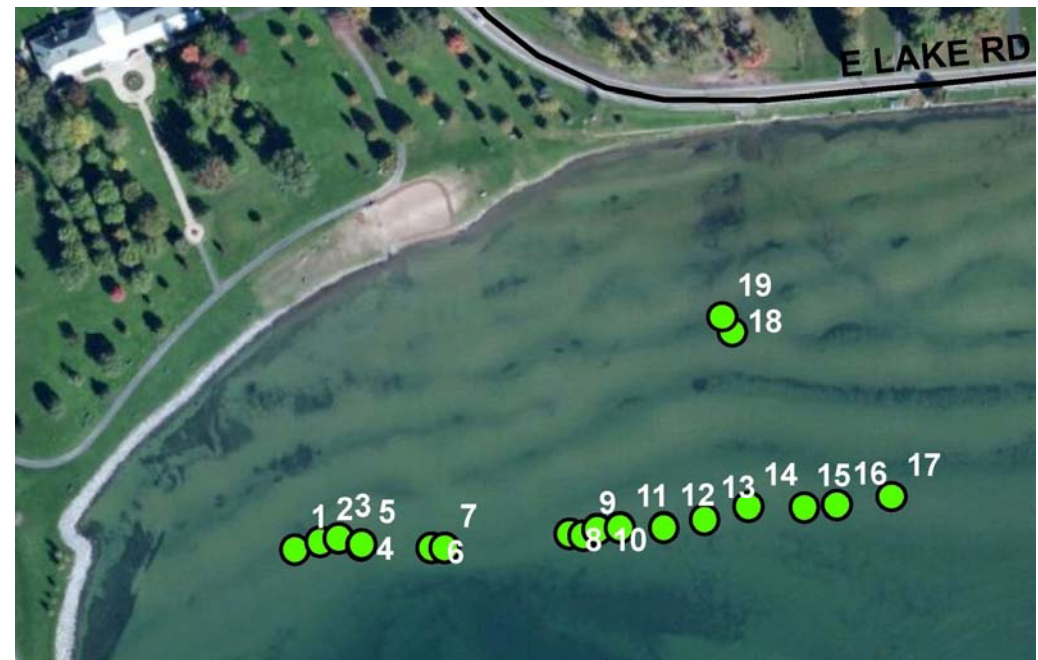


2014 Asian Clam Survey on North Owasco Lake



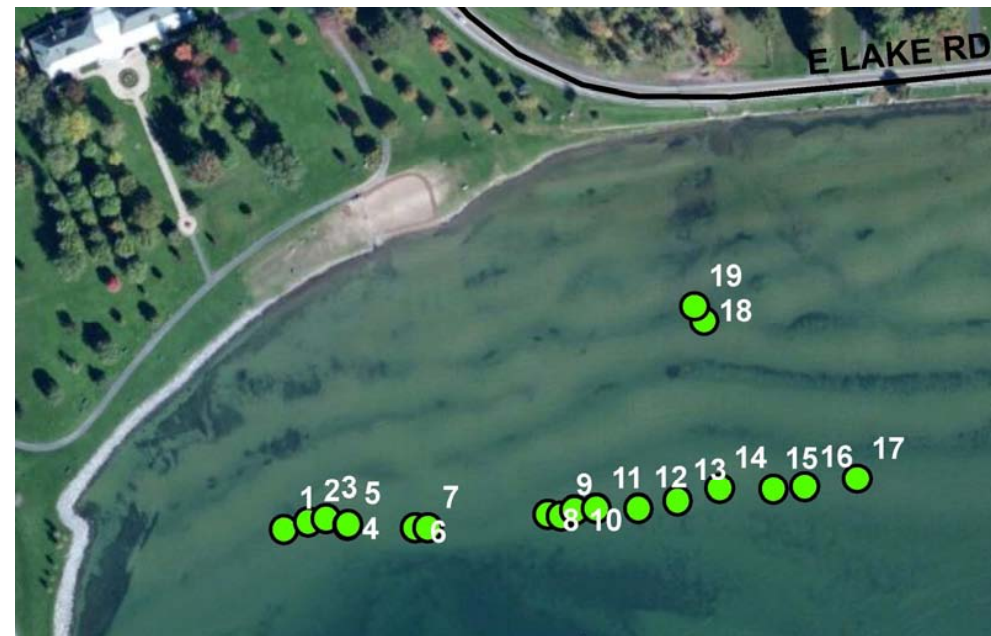
East Side off of Pavilion Beach

- In the area of samples 1-4, in 2013 we found 22 clams in one sample. Half were larger than 10 mm.
- Samples 1, 2 and 4 had no clams this year. Sample 3 had only 3 clams. One was less than 10 mm and the other two were 18-20 mm.



East Side off of Pavilion Beach

- About ½ the samples did not have clams. Total clams collected were 15.
- No sample had more than 3.
- Over 50% were larger than 10 mm.
- 40% were larger than 16 mm.
- Poor survival. Few young.



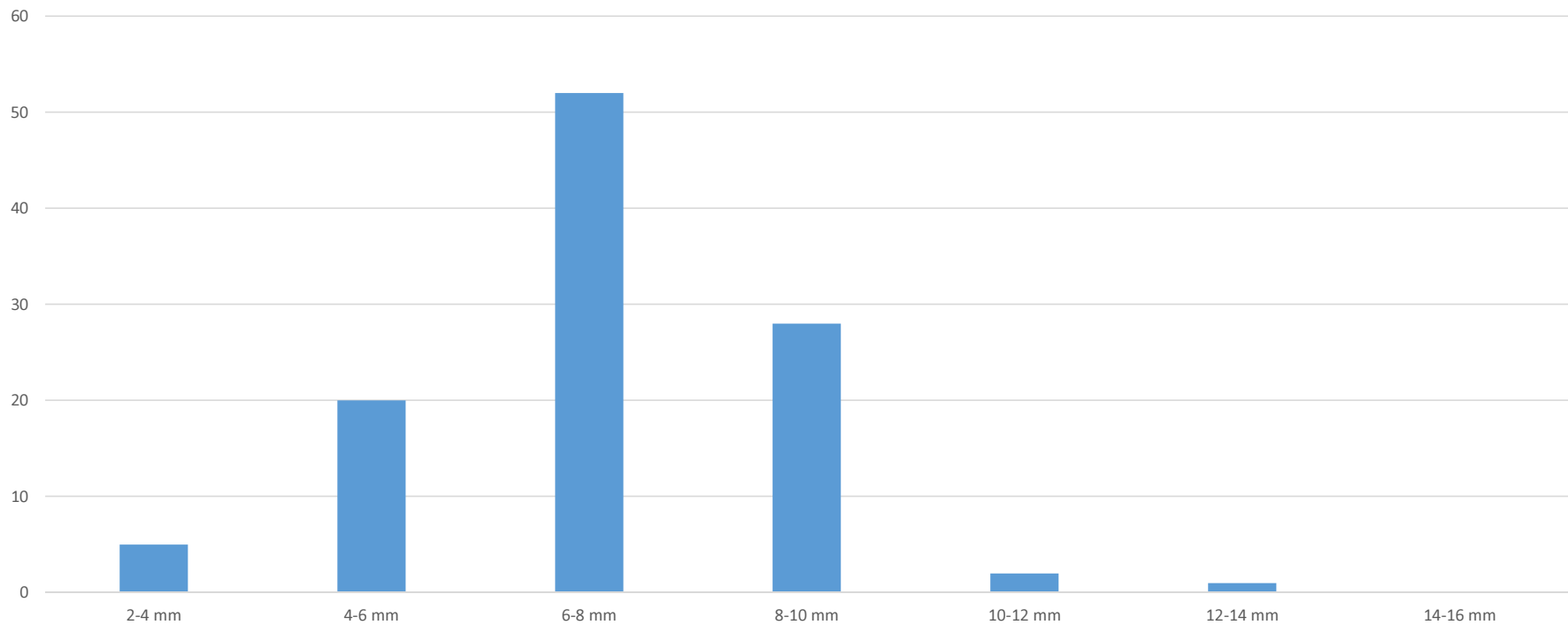
West Side off of Deauville Island

- Transect to shore.
- 97% were smaller than 10 mm.
- All samples had less than 11 clams except for #41 (had 35).



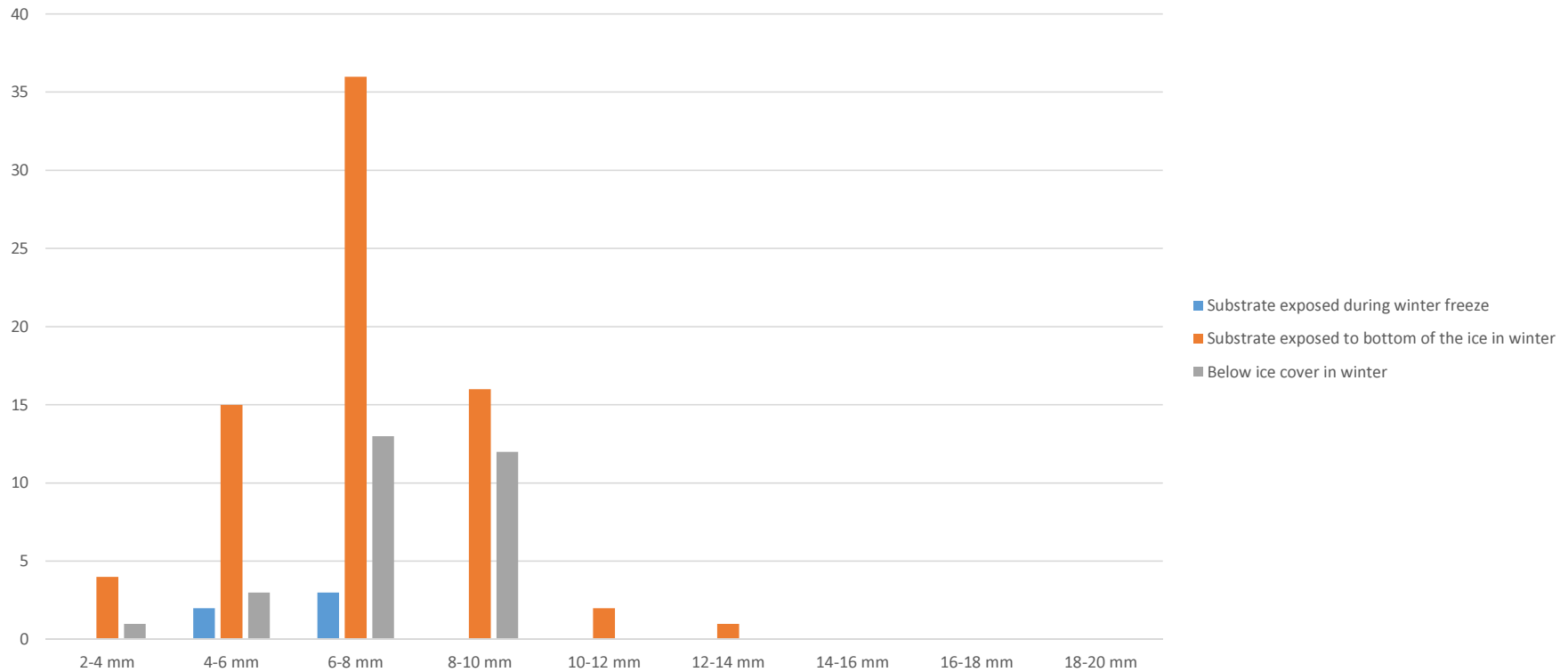
West Side off of Deauville Island

Asian clam sizes along north south line off of Deauville Island

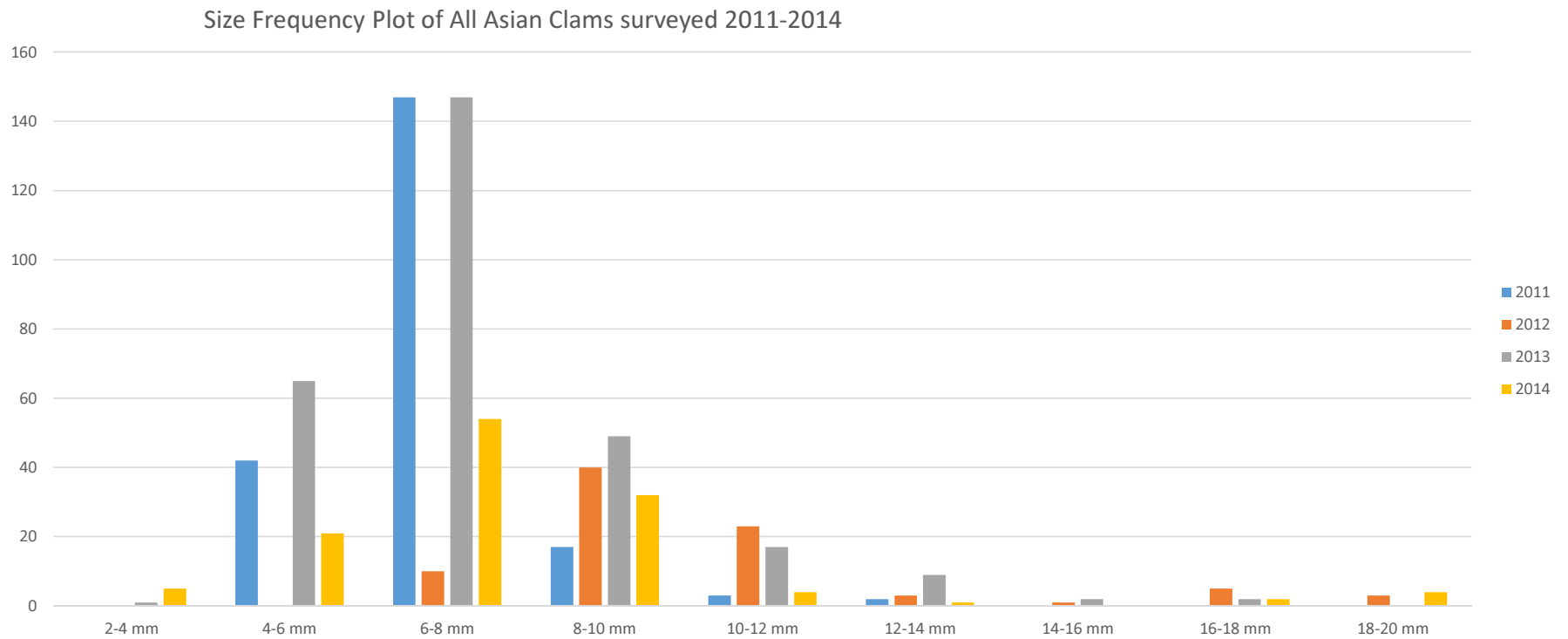


West Side off of Deauville Island

Asian clam in North South Transect



Size Frequency Plot of All Asian Clams



Quantitative Samples

- 2011: 1018 clams per m²
- 2012: 428.81 clams per m²
- 2013: 1462 clams per m²
- 2014: 1018 clams per m²

- Lake George: up to 6,000 per m²



Observations

- Over half the clams on the east side were older clams.
- Almost all the clams on the west side were young of the year.
- Drawdown appears to cause 100% mortality of clams in areas where the substrate was exposed during the winter.
- On the west side, it appears young of the year clams are transported into the shallow areas since there are no mature clams there to reproduce.
- Some occasionally denser population areas but less dense than Lake George.

